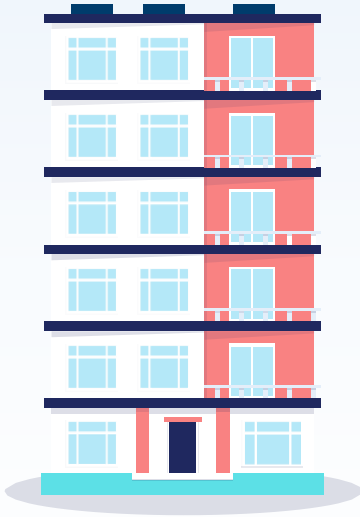




# MG ENGINEERING & CONSTRUCTION

TRUSTED GENERAL CONTRACTING PARTNER





Love what you do  
and  
Do what you love  
and  
Learn the art of  
Constantly  
enjoying  
every minute of  
your life

150 mi  
man

# TABLE OF CONTENTS



1

ABOUT US

2

OUR EXPERTISE

3

VISION & MISSION

4

CORE VALUES

5

OUR SERVICES

6

QUALITY & SAFETY  
POLICY

7

MACHINERIES

8

PROJECT GALLERY



# ABOUT US



**MG ENGINEERING & CONSTRUCTION** was established in the year 2014.

We carry a technical heritage of more than a decade and a growing presence in Western and Central part of India, contributing to be the successful partner to cement and steel revolution.

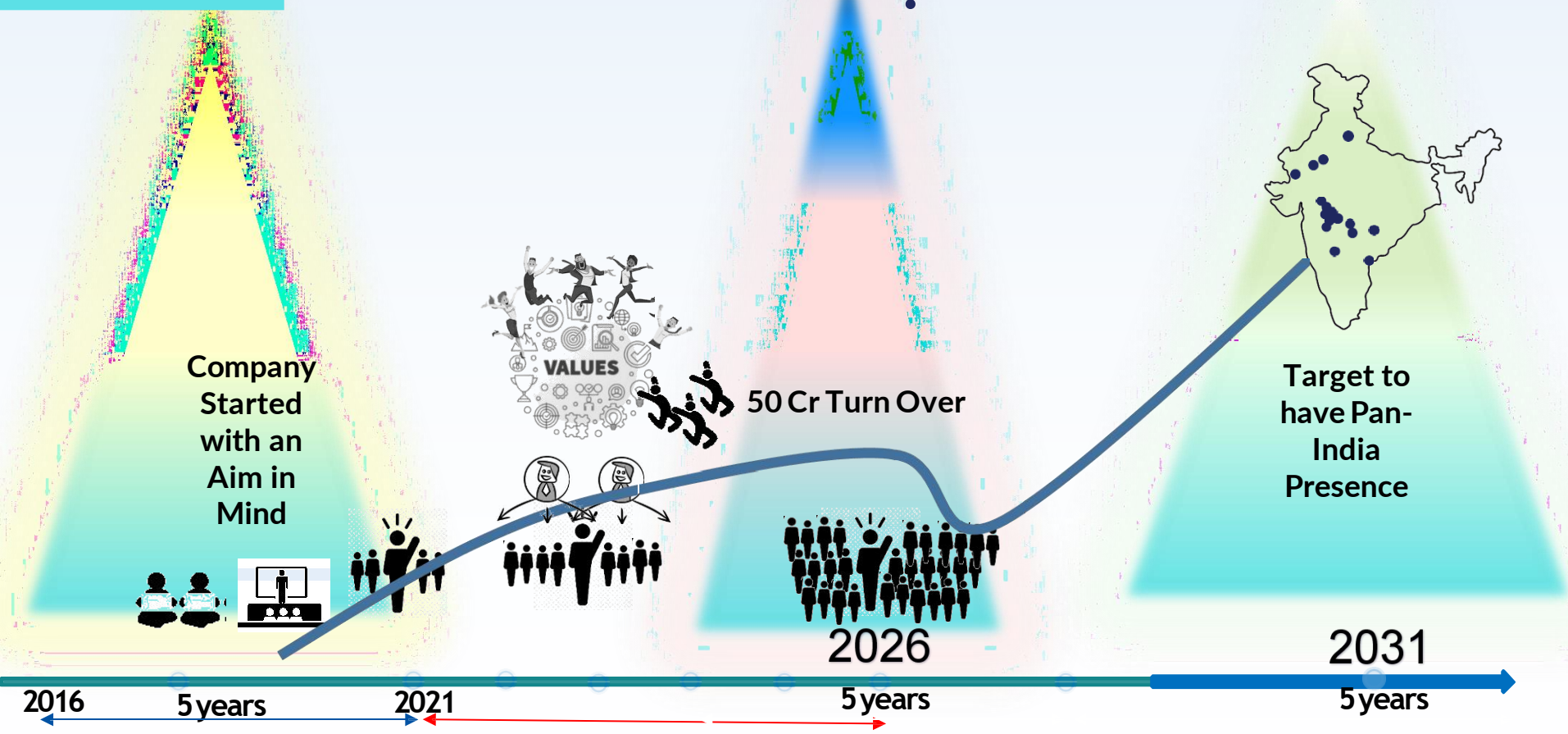
With the innovation and evolvement in the construction industry and creation of infrastructure being pushed by government, Industry has responded to it with the solutions that has attracted the mind set of conventionalists. Growth in infrastructure demands Speed in Execution, Quality, Flexibility and No Cost Over-Runs.

M. G. Engineering & Construction has acknowledged the very fact and tends to adapt the current scenario maintaining the standards demanded by the Industry.

In last ten years M. G. has transformed itself to A Turn Key Solution Providers.

We believe in giving single point solutions to the customer with not only product differentiation but also quality service differentiation.

# ABOUT US



# OUR EXPERTISE



**COMMERCIAL**



**INDUSTRIAL**



**WAREHOUSE**



**BUNGLOWS**



**HOSPITALITY**



**MIX USE**

# OUR VISION & MISSION



OUR VISION IS TO PROVIDE CONSTRUCTION SERVICES ENSURING PRIME FOCUS ON SAFETY, QUALITY, TIME & COST BY PROVIDING TECHNICAL PROFICIENCY IN MULTIDISCIPLINARY AREAS OF THE PROJECT.

OUR MISSION IS TO ENDURE AND DECLARE OUR PURPOSE AS A COMPANY AND SERVE AS THE STANDARD AGAINST WHICH WE WEIGH IN OUR ACTIONS AND DECISIONS.



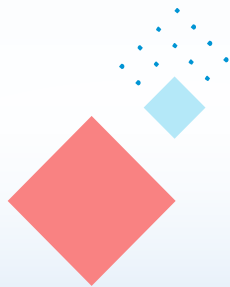
# OUR CORE VALUES

## PROJECT COMPLETION WITH PERFECT SERVICE

AT M. G., WE HAVE MANAGED TO SERVE THE GROWING CLIENTELE SPANNING ACROSS DIFFERENT TYPES OF BUILDING VIZ. INDUSTRIAL FACTORY BUILDINGS, WAREHOUSES, OFFICE BUILDINGS, SHOWROOMS, FUNCTION/ BANQUET HALLS, COMMERCIAL CENTRES ETC. WE TAKE IMMENSE PRIDE TO HAVE MANAGED TO DELIVER EVERY STRUCTURE WITH ZERO ERROR AND WITH IN STIPULATED TIME.

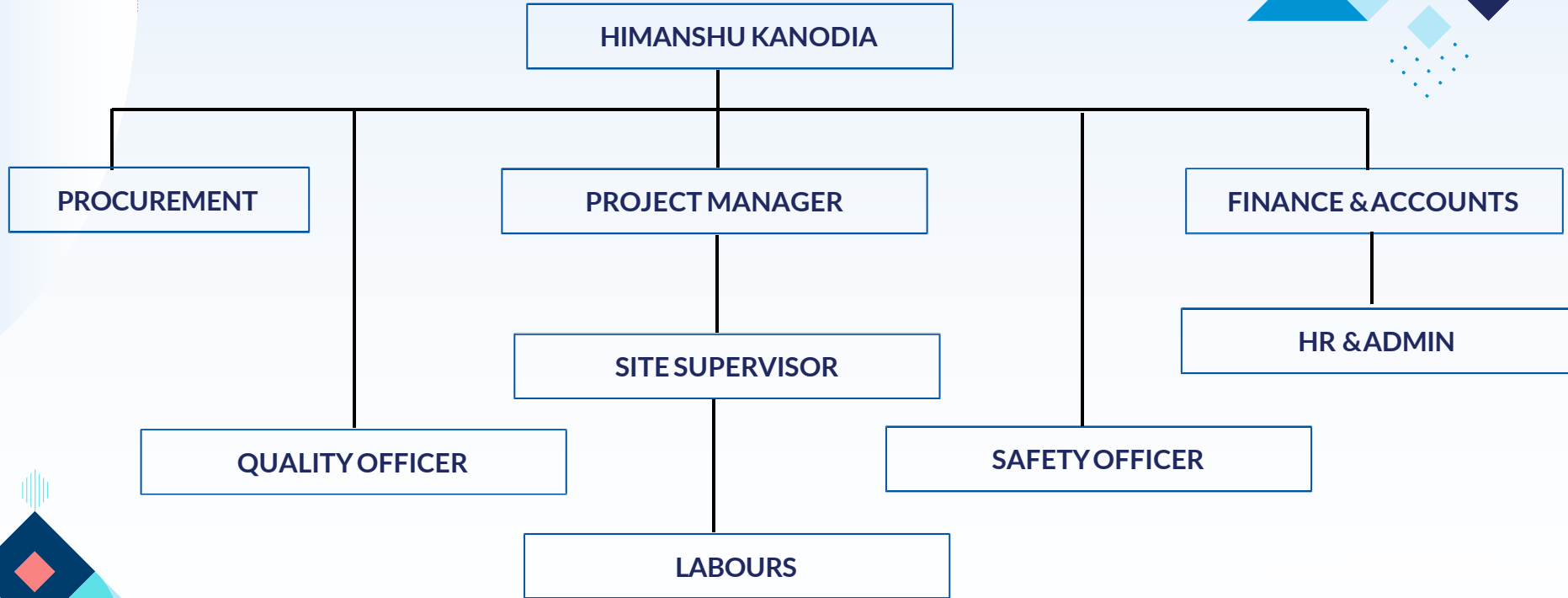
## AT M. G. WE HONOUR PRINCIPLES & VALUES

- AN HONEST APPROACH TOWARDS THE BUSINESS LEADS TO GROWTH
- INNOVATION, ROBUSTNESS, PRACTICALITY & PERFECTION
- MAKE A DIFFERENCE WITH SERVICE TO CLIENT
- PROFESSIONAL SERVICES & ETHICAL BEHAVIOUR
- MUTUAL RESPECT
- PASSION FOR THE WORK
- PURSUIT OF EXCELLENCE
- ACCOUNTABILITY & INTEGRITY





# ORGANIZATION STRUCTURE



# OUR SERVICES



CIVIL CONSTRUCTION



PEB



MEP



FIRE FIGHTING



LIASIONING



RACKING SYSTEM

# QUALITY POLICY



WE AIM TO PROVIDE A PROFESSIONAL AND ETHICAL SERVICE TO OUR CLIENTS AND TO DEMONSTRATE OUR INTENTIONS, WE HAVE IDENTIFIED FOLLOWING QUALITY OBJECTIVES.

- ❖ TO MAINTAIN EFFECTIVE QUALITY MANAGEMENT SYSTEM.
- ❖ EXPAND OUR CUSTOMER BASE IN LINE WITH THE REQUIREMENTS OF OUR QUALITY MANAGEMENT PROCESSES AND WITHOUT COMPROMISING OUR QUALITY. TO ACHIEVE AND MAINTAIN A LEVEL OF QUALITY WHICH ENHANCES THE COMPANY'S REPUTATION WITH CLIENTS.
- ❖ TO PROGRESSIVELY GROW OUR BUSINESS WHILE MAINTAINING OUR FOCUS ON THE QUALITY
- ❖ IF WE MAKE A MISTAKE, WE WILL ADMIT IT AND PUT THINGS RIGHT AS SOON AS POSSIBLE.
- ❖ WE WILL ANALYZE CUSTOMER FEEDBACK DATA, INTERNAL PERFORMANCE DATA AND BUSINESS PERFORMANCE DATA TO ENSURE THAT OUR QUALITY OBJECTIVES ARE BEING MET.

# SAFETY POLICY



THE HEALTH, SAFETY, AND WELFARE OF EMPLOYEES IS PRIME IMPORTANCE TO OUR COMPANY. THE RESPONSIBILITY OF SAFETY AT WORK RESTS UPON ALL THE SECTORS OF MANAGEMENT AND THE COMPANY WILL ENSURE THAT THIS POLICY IS PURSUED THROUGH THE ORGANIZATION. THE COMPANY WILL TAKE ALL REASONABLY PRACTICABLE PRECAUTIONS TO ENSURE THE HEALTH, SAFETY, AND WELFARE AT WORK OF ITSEMPLOYEES BY PROVIDING:

A SAFE WORKING ENVIRONMENT BY THE DESIGN, CONSTRUCTION, OPERATION, AND MAINTENANCE OF ALL PLANT, EQUIPMENT, AND FACILITIES.

SAFE SYSTEMS OF WORK.

ADEQUATE INSTRUCTION, INFORMATION, TRAINING, AND SUPERVISION. CONTROL ALL SITUATIONS LIKELY TO CAUSE DAMAGE TO PROPERTY AND EQUIPMENT.

ADEQUATE FACILITIES FOR CONSULTATION BETWEEN MANAGEMENT AND EMPLOYEE REPRESENTATIVE.

THE MAKING OF SUCH TESTS, EXAMINATIONS, SAMPLES, AND RECORDS AS ARE NECESSARY TO MONITOR THE WORKING ENVIRONMENT.

THE COMPANY EXPECTS EMPLOYEES TO CONFORM TO THIS POLICY AND COMPLY WITH THE RELEVANT HEALTH AND SAFETY STANDARDS LAID DOWN BY VARIOUS STATUTORY REQUIREMENTS. THE EMPLOYEES ARE ALSO EXPECTED TO EXERCISE ALL REASONABLE CARE FOR THEIR HEALTH AND SAFETY AND THAT OF OTHERS WHO MAY BE AFFECTED BY THEIR ACT OF OMISSION.

THE OVERALL RESPONSIBILITY FOR THE HEALTH, SAFETY, AND WELFARE OF THE COMPANY AND ITS PERSONNEL IS VESTED IN THE COMPANY'S MANAGING DIRECTOR. THE CONSTRUCTION MANAGER BEARS SPECIAL RESPONSIBILITY FOR SAFETY AND ACTS AS THE MANAGING DIRECTOR'S DEPUTY.

THE COMPANY WILL GIVE FULL BACKING TO THIS POLICY AND THE QUALITY AND SAFETY MANAGER, WHOSE FUNCTION WILL BE TO MONITOR AND OPERATE THE POLICY AND SUPPORT ALL THOSE WHO ENDEAVOR TO CARRY IT OUT.

THE POLICY IS SUBJECT TO REGULAR REVIEW AND AMENDMENT.

# ISO CERTIFICATION

MG



# PLANT, MACHINERIES & EQUIPMENTS

- ❖ Tractor with hydraulic trolley
- ❖ Concrete Mini Batching Plant
- ❖ Concrete Mixer and concrete pump
- ❖ Needle vibrator electrical and Diesel
- ❖ Welding machines
- ❖ Steel Bending and Shearing Machine
- ❖ Pump Set dewatering diesel and electrical
- ❖ Trimax Machinery/Vacuum pump/Floater/Surface vibrator/  
Other equipments
- ❖ Shuttering Material(Steel) plates, pans props
- ❖ H-Frame beams, Cup-lock system, M S Weller channel, etc.
- ❖ Slump Cone, Cube testing machine, Cube Moulds,
- ❖ Total Station, Sand Sieve, Metal Sieve
- ❖ Diesel generator
- ❖ Earth Compactor
- ❖ Concrete Breaker etc.





# PROJECT GALLERY



































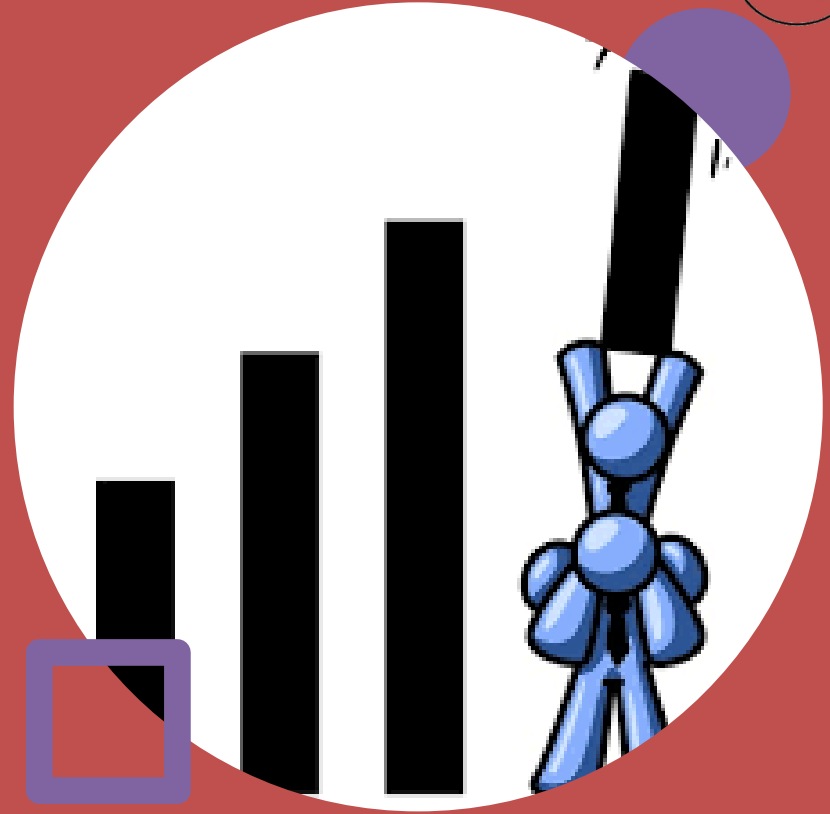








# SAFETY AND QUALITY



# SAFETY PLAN

- MGEC is committed to protect men, material and machinery by enforcing the safety at works. For prevention of accidents at works, the following programs shall be conducted:
- Safety orientation & awareness
- Basic rules of personnel safety
- Tool Box Talks, Weekly Safety Reviews, Safety Committee etc.
- Personnel protective equipment's
- Safety in excavation by providing proper barricading
- Safe working with power tools & mobile equipment's
- House keeping and inspection of work area
- Safety Guidelines for working on plants and machinery
- Caution boards displayed at work sites
- Providing First Aid equipment's



The background of the slide features several rolled-up architectural blueprints. The blueprints are white with black lines and text, showing various technical drawings, dimensions, and annotations. They are arranged in a way that suggests they are being unrolled or examined. The blueprints are set against a light blue background with a subtle wood grain texture.

# PROJECT QUALITY AND SAFETY, LEGAL COMPLIANCE PLAN

- **HSE :**

- HSE Plan will be submitted and any specific requirement of site will be added
- Method Statement will be submitted
- Unless client gets satisfied for high risk jobs, work will not be started
- Work permits will be taken day before start of any work
- All safety rules will be followed
- All high Risk jobs will be done under observation of safety officer with necessary safety precautions e.g. safety harness will be used for heightened jobs

- **QUALITY :**

- QAP will be submitted as per requirement before start of work
- All quality checklist will be submitted to consultant after signing work will be executed



# QUALITY OBJECTIVES



**Co-ordinate with  
Architect/Designer,  
complying with quality  
requirements**



**Use of standard methods,  
equipment's, trained  
personnel and proper  
working methods**

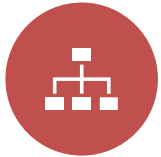


**Mechanise construction  
process wherever possible**



**To train staff to improve  
their technical skills and  
knowledge**

# REPORTING



**PM TO HEAD OF  
PROJECT – EVERY  
DAY**



**PROJECT HEAD –  
ONE/TWO DAY  
VISIT PER WEEK AT  
SITE INCLUDING  
WEEKLY MEETING**



**MD – ONCE IN A  
WEEK**



**DAILY DPR  
SUBMISSION**



**WEEKLY REPORT  
SUBMISSION TO  
CLIENT**



**SAFETY REPORT  
SUBMISSION  
WEEKLY/MONTHLY  
AS PER NORMS**



# THANK YOU!



[contact.mgec@gmail.com](mailto:contact.mgec@gmail.com)



+91 9998108833  
+91 8010923533

